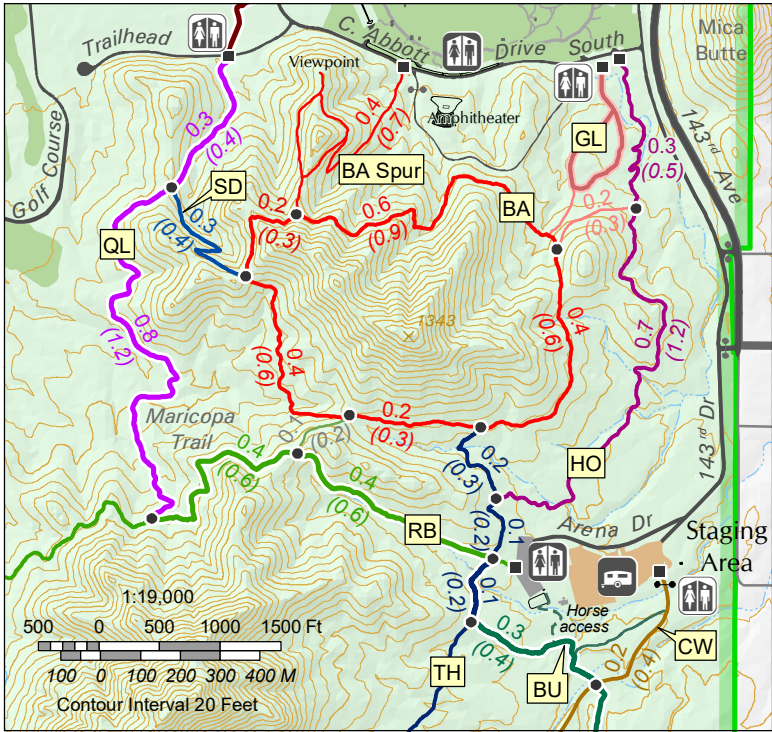
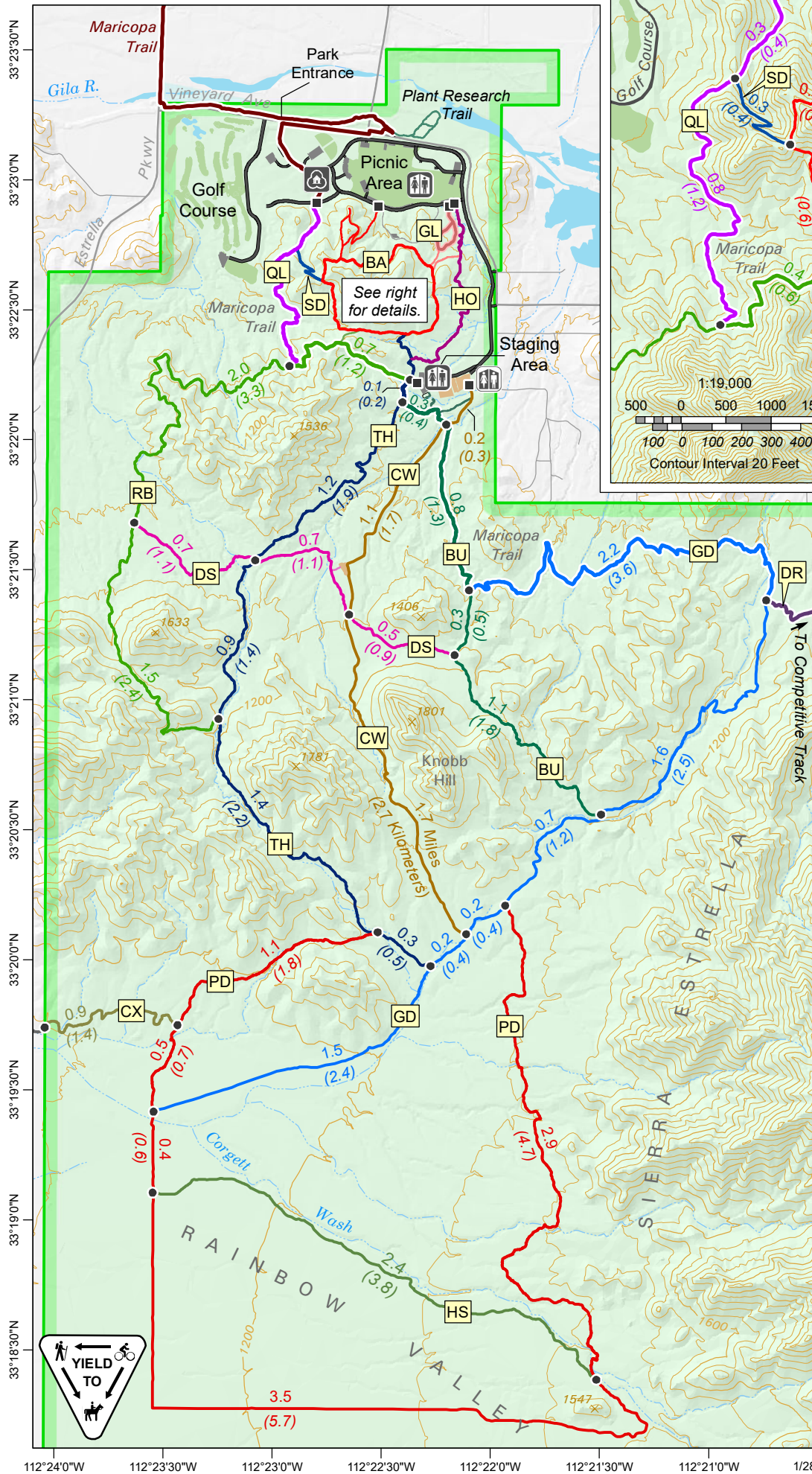


# Estrella Mountain Regional Park



Trail Code	Trail Name	Length Mi (Km)	Use	Rating
BA	Baseline	2.6* (4.2)*	H,M	●
BU	Butterfield (front)†	1.1 (1.7)	M	●
BU	Butterfield (back)†	1.5 (2.3)	M	●
CW	Coldwater	2.9 (4.7)	M	●
CX	Crossover	0.9 (1.4)	M	●
DR	Desert Rose	3.1 (4.5)	M	●
DS	Dysart	1.9 (3.1)	M	●
GD	Gadsden	6.5 (10.4)	M	●
GL	Gila	0.5* (0.7)*	BF	○
HS	Homestead	2.4 (3.8)	M	●
HO	Horseshoe	1.0 (1.7)	M	●
PD	Pedersen	8.4 (13.4)	M	◇
QL	Quail	1.0 (1.6)	M	●
RB	Rainbow Valley	4.2 (6.7)	M	◇
SD	Saddle	0.3 (0.4)	M	●
TH	Toothaker	4.1 (6.6)	M	●

M = Multiple Use (all non-motorized access allowed)  
H = Hike Only  
BF = Hike Only/Barrier-free

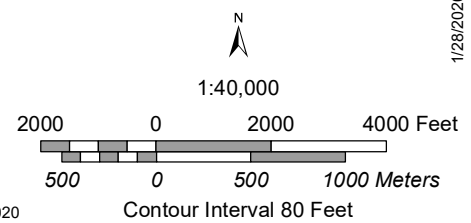
○ Easiest  
● Easy  
■ Moderate  
◇ Moderate - Difficult

- Lengths shown above are one-way unless indicated by \* for round-trip hiking distance from trailheads; map shows only segment lengths.
- Lengths on map are for segments between trail junctions (●), or junction and trailhead.
- Due to rounding, segment lengths on map may not add up to trail totals shown above.
- †Butterfield rating changes to Moderate at junction with Gadsden heading south.

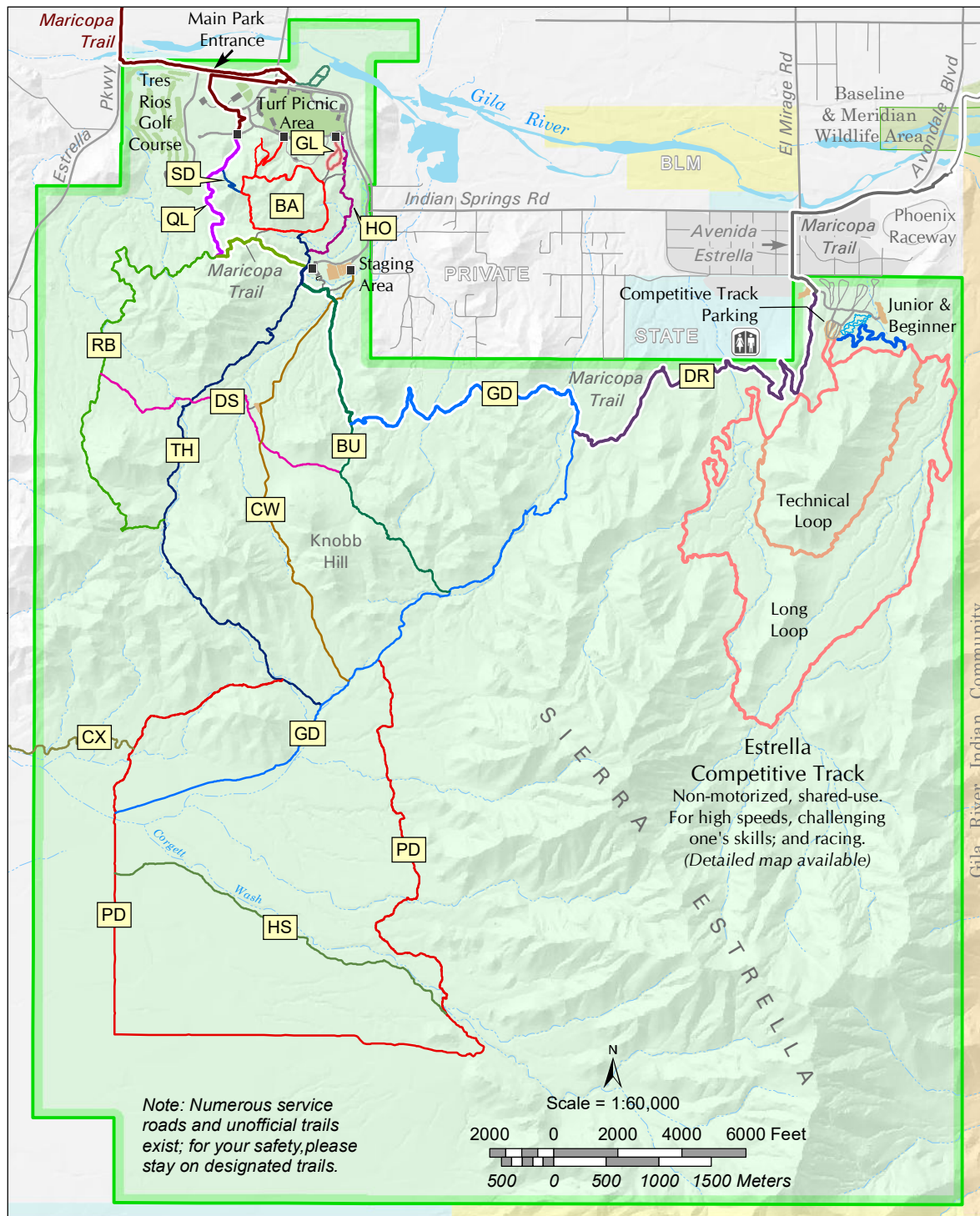
Maricopa Trail\*  
Park Trail\*  
Barrier-free Trail

Trailhead  
Nature Center  
Restrooms  
Portable Restroom  
Campsites  
Locked Gate

\*Trail color varies by name.







## Welcome to Estrella Mountain Regional Park

This 19,840-acre park features 65 acres of grass with ramadas, picnic tables, grills, restrooms, playgrounds, lighted ball fields, and an 18-hole golf course. It also includes miles of trails and a competitive track.

### Park Rules

#### PLEASE OBSERVE PARK RULES!

They are posted throughout the park on information boards and are available upon request.

### Nature Center

The new **Nature Center** includes the park office, animal exhibits, interpretive displays, educational materials, meeting rooms, and a retail area. It is available for events.

### Picnicking

Estrella Park's large Turf Area offers **ramadas** for large group picnics, weddings, and parties. A separate map of the Turf Area with information is available.

### Other Recreational Facilities

An **amphitheater** has a stage and seating for hundreds. It may be reserved for activities including weddings, church gatherings and scout events. Two **baseball fields** can be used on a first-come, first-served basis (as is) for teams or for a large group wanting to picnic and play baseball. Reservations for facilities can be made by calling the Park Office at (623) 932-3811. A special-use permit may be required.

**Tres Rios Golf Course:** (623) 932-3714, [www.estrella-golf.com](http://www.estrella-golf.com)

### Camping

The Park offers seven developed **RV sites** near the staging area. Each has a large parking area to accommodate 45-foot RVs, with water, sewer and electrical hook-ups, picnic table and barbecue fire ring. Call or stop in the park office for use and reservation information. Individual Primitive and Group Camping are not currently available.

### Hours of Operation and Contacts

Estrella Mountain Regional Park is open 6 a.m. to 8 p.m. Sun – Thurs and 10 p.m. Fri & Sat. A per-vehicle entry fee is required. Please use the self-pay station when the entrance booth is not staffed. For further information please contact the Park Office.

Mailing Address:  
Estrella Mountain Regional Park  
14805 West Vineyard Avenue  
Goodyear, AZ 85338

Telephone: (602) 506-2930 #6  
E-mail: [MaricopaCountyParks@maricopa.gov](mailto:MaricopaCountyParks@maricopa.gov)



Interactive Trail Map

### Trails

Estrella Park offers some 40 miles of trails for hiking, mountain biking, and horseback riding and range in difficulty from easy to strenuous. The **Baseline Trail** is a popular 2.3-mile loop trail. The **Gila Trail** is a half-mile barrier-free trail just south of the Navy Area of the park.

Note: The park's terrain is rugged desert and sandy washes. Travel can be arduous if you are not prepared. Always carry plenty of water, use protection from the sun, and let someone know where you are going. Please enter the Maricopa County Sheriff's Office phone number of (602)-876-1011 into your cell phone prior to starting a hike, for use in case of emergency.

### Competitive Track

The **Competitive Track** is designed to provide challenging, strenuous, and high-speed outdoor recreation for individuals, groups, and events. The tracks are shared-use, one-way only, and are designed for cross-country runners and joggers, fast bicyclists and racers, and trotting/galloping equestrians and endurance riders. No leisure travel is permitted on the track. A separate, detailed map is available.

DISCLAIMER: This map is a graphical representation designed for general reference purposes only. Viewer/User agrees to indemnify, defend and hold harmless Maricopa County, its officers, departments, employees and agents from and against any and all suits, actions, legal or administrative proceedings, claims, demands or damages of any kind or nature arising out of the use of this map, or the data contained herein, in its actual or altered form.



Maricopa County  
Parks and Recreation Department